

# ALINA 220

DIRECT | SURFACE

## ALINA 220



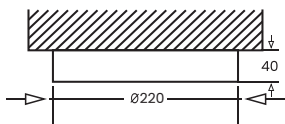
**ALINA** surface mounted diffused downlighter with compact circular design is made up of die cast aluminium housing and with premium powder coated finish.

Powered by high quality LED's with a binning tolerance of  $\leq 3$  SDCM and  $CRI \geq 90$ . The luminaire maintains atleast 70% of its luminous flux after 50,000 operating hours, guaranteeing long term reliability. High efficiency PMMA diffuser gives uniform illumination

Alina Surface downlighter is crafted for direct light distribution making it ideal for residential, commercial & professional applications.

### SINGLE LINE DIAGRAM SURFACE

#### ALINA 220



## ALINA 220



### QUICK INFO

#### MOUNTING TYPE

SURFACE

#### MATERIAL COLOUR

CUSTOMIZE RAL AVAILBLE

#### PROTECTION MODE

IP40

#### DRIVER DETAILS

ON/OFF/, DALI-2 DT6 / DALI-2 DT8/ DALI +

POWER FACTOR (PF) -0.95

THD- <10%

UGR - <19

#### LED

CCT- 3000K/ 4000K/ 5700K/ TUNABLE WHITE 2700K-6500K

CRI-  $\geq 90$

LIFE SPAN - L70@50000H

MACADAM -  $\leq 3$  SDCM

#### BEAM ANGLE

110°

#### OPTICS

PMMA DIFFUSER

#### EFFICACY

3000K- 73.7

4000K- 83.2

5700K- 94.0

TUNABLE WHITE 2700K-6500K- 83.2

#### ELECTRICAL

WATTAGE - 25W

INPUT VOLTAGE- 220-240 VAC

#### PHYSICAL DIMENSIONS

DIA- 220MM

HEIGHT- 40MM